

CERTIFICATE OF LOCATION OF GOVERNMENT CORNER

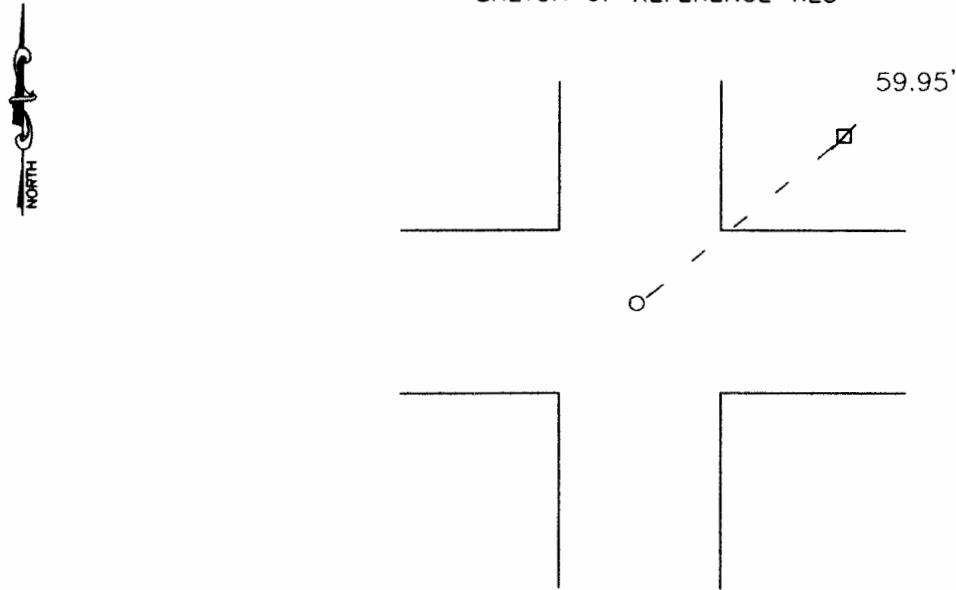
Northeast Corner of Section 32, Township 108, Range 43, 5th P.M.

STATE OF MINNESOTA, County of Murray

At the corner location shown on the sketch:

- On 11-14-01 found a rerod set by the Highway Department
DATE
- left monument as found, lowered monument, removed monument (explain)
- On _____ placed a _____
DATE

SKETCH OF REFERENCE TIES



Nail and shiner in powerpole 59.95' Northeast

Statement of evidence relative to this corner location is on back of page.

I hereby certify that this document and the data contained herein was prepared by me or under my direct supervision.

Lyle E Moser 12-17-01
SIGNATURE DATE

Registration No. 11943

- Land Surveyor, Professional Engineer
- County Surveyor, County Engineer

OFFICE OF THE COUNTY RECORDER **DEC 27 2001**

County of _____

I hereby certify that this document was filed in the Co. Recorders office at _____ M on the _____ day of _____ A.D. 19 _____

County Recorder _____

By _____, Deputy

DOCUMENT NO. _____

Statement of Evidence

The original survey was done by J.W. Bishop in 1866.

On November 14, 2001 Moseng Land Surveying found a rerod set by the County Highway Department. The rerod was set over a concrete marker.